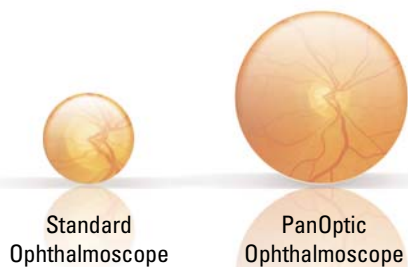




Welch Allyn's PanOptic™ Ophthalmoscope Innovative Optics for Panoramic Views of the Fundus

Developed and patented by Welch Allyn — creator of the world's first hand-held direct-illuminating ophthalmoscope — the PanOptic is a breakthrough concept in ophthalmology. Thanks to an innovative, proprietary optical design known as Axial PointSource™ Optics, the PanOptic will greatly enhance your fundoscopic examinations.

FIELD OF VIEW



5X

Larger View of the Fundus

Just look at all that PanOptic offers:

- Fast, easy entry into small, undilated pupils
- A 26% increase in magnification, making it easier to see retinal details
- 5X larger field of view than you see with standard ophthalmoscopes in an undilated eye
- Greater distance between practitioner and patient means greater comfort for all
- 25° field of view versus the 5° field of view of standard ophthalmoscopes
- Complete compatibility with existing Welch Allyn 3.5v power sources

WelchAllyn®

Advancing Frontline Care™

Revolutionary new technology for a difference you can see

- **Patented Axial PointSource™ Optics:** This proprietary technology makes it easy to enter undilated pupils, and provides a 25° field of view, resulting in a view of the fundus that's 5X greater than you see with a standard ophthalmoscope in an undilated eye.
- **Halogen HPX™ Lamp:** Provides whiter, brighter light.
- **Glare Extinguishment System:** Prevents interference from unwanted glare and reflections.
- **Welch Alllyn 3.5v Power Sources:** Compatible with any standard 3.5v power source including: desk charger handles, convertible battery handles, wall transformers and the Lithium Ion Power Handle.



- **Patient Eyecup:** The eyecup establishes and maintains proper viewing distance, provides image stability, serves as a pivoting point for panning around the retina, helps with orientation, and screens out ambient light. The eyecup is cleanable and reusable.
- **PanOptic Soft Grip:** Ergonomically designed for maximum comfort, balance, and access to controls.
- **Dynamic Focusing Wheel:** Adjusts the focus in a continuous, smooth action for more precise control and optimum view. Available focusing range is -20 to +20 diopters.
- **Aperture Dial:** Allows you to select micro, small, and large spot sizes. Also includes red-free filter and slit aperture. Optional half-moon aperture (11810 only) or cobalt blue filter with add-on magnifying lens (11820 only) for corneal exams.



71814-MPS
Desk Charger Set (UK)

71812-MPS
Desk Charger Set (SA and Europe)



76791-4MP4 Integrated Diagnostic System (UK)
76791-2MP2 Integrated Diagnostic System (SA and Europe)

PanOptic Ordering Information:

11810	11820	
■	■	3 spot sizes: micro, small and large
■	■	Slit aperture
■	■	Red-free filter
■		Half-moon aperture (provides a combination of depth perception and field of view)
	■	Cobalt blue filter with add-on magnifying lens for corneal examinations (surrogate for Woods Light)

PanOptic Specifications:

Dimensions: 13cm L x 3.6cm W x 9.5cm H
without eyecup (with eyecup: 16.7cm L)
Weight: 217g without eyecup; 227g with eyecup
Focusing Range: -20 to +20 diopters

Component Information:

Patient Eyecups (Package of 5 Reusable Eyecups) – 11870
Halogen HPX Lamp – 03800-U
Corneal Viewing Lens (for use with 11820) – 11875
Diagnostic Set Carrying Case (hard) – 05258-M
Diagnostic Set Carrying Case (soft) – 05815-M

For more information on the Welch Alllyn PanOptic ophthalmoscope please contact your Welch Alllyn representative

UK Customer Services

Welch Alllyn UK Ltd, Cublington Road, Aston Abbots, Buckinghamshire HP22 4ND, England
Tel: +44 (0) 207 365 6780 Fax: +44 (0) 207 365 9694

South Africa Customer Services

Welch Alllyn South Africa (PTY) Ltd, 394 Surrey Avenue, Ferndale, Randburg 2194, South Africa
P O Box 809, Fontainebleau 2032, South Africa
Tel: +27 (0) 11 777-7555 Fax: +27 (0) 11 777-7556

Welch Alllyn European Customer Services,

Navan Business Park, Dublin Road, Navan, Co. Meath, Republic of Ireland
Tel: +353 46 90 67790 Fax: +353 46 90 67754

www.welchallyn.com

© 2004 Welch Alllyn SM2381EU Rev. B MC 2094

WelchAlllyn®

Advancing Frontline Care™